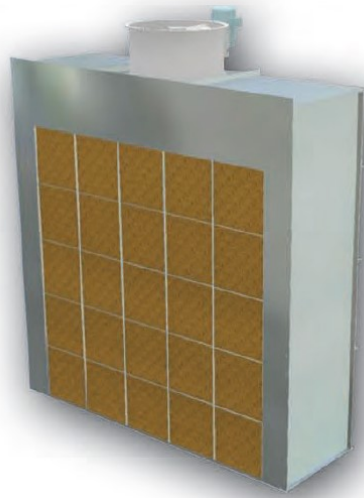


FABFC Filter Chambers Paint—Fume—Dust

FEATURES & BENEFITS

- HEAVY DUTY CONSTRUCTION
- MODULAR DESIGN ALLOWS FOR
- CONVERSION TO PAINT BOOTH
- EASY TO INSTALL



FILTER WALL

FABFC-8-7-T3

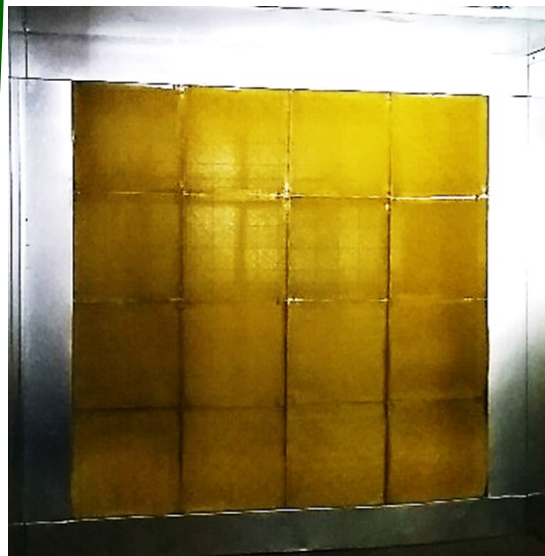
These floor model chambers are designed for exhausting dust, harmful vapors and paint fumes. The dry arrestor filters trap the airborne overspray particles before the filtered air is discharged through the exhaust system and into the atmosphere.

The chambers are available in a wide range of designs to meet practically any production requirement. Air replacement units and intake chambers can be added as well as reduced airflows for automatic spray operations.

EXHAUST SYSTEM FEATURES

A tubeaxial exhaust fan, designed specifically for use in paint spray exhaust chambers, powers the airflow through the booth and exhaust stack. All exhaust fans are of non-sparking construction.

The motor drive and bearings are sealed from the air stream of the exhaust.



SPECIFICATIONS

8'W x 7'H Filter Chamber:

Over All Dimensions: 8'4"W x 2'2"D x 8'5"H

The Booth Includes:

- 24 inch Fan with Sparkless Aluminum Blade
- 1 H.P. Totally Enclosed Motor 230/460 Volt, 3 phase 6,800 CFM @ 1/4"SP
- Belt Guard
- Two Sets of Paint Filters
- Full set of assembly instructions and hardware
- Filter Chamber must be assembled and hardwired (switch to be supplied by electrician)

Optional Items:

- AG-20 Case of 50 Filters
- BE-54-24 Duct Flange (Recommended for all booths)
- A-24 3 Foot Section of Duct
- AD-24 3 Foot Section of Duct with Clean Out Door
- B-1/2-24 90 Degree Elbow
- EF-24 Flat Roof Flange (Roof)
- WC-24 Weather Canopy / Damper (Roof)
- S-24 Wall Shutter (Side Wall)
- E3 Explosion Proof Motor Upgrade for Spraying Applications

PAINT ARRESTANCE FILTER TEST REPORT
 Spray Removal Efficiency & Paint Holding Capacity

Tested for: XXXXXXXXXX
 Filter Mfr.: XXXXXXXXXX
 Filter Name: XXXXXXXXXX
 Report#/Test# R 675 I 775
 Report Date: September 13, 2005

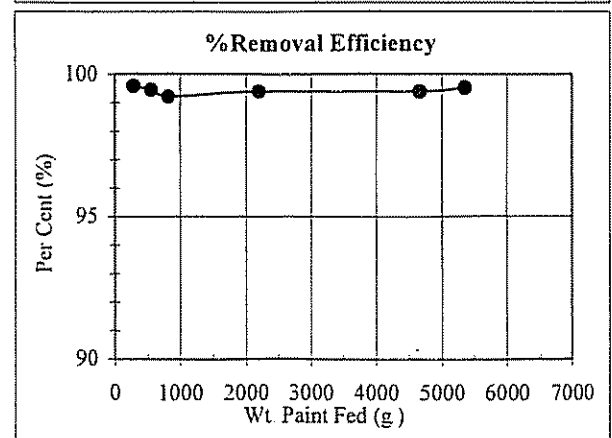
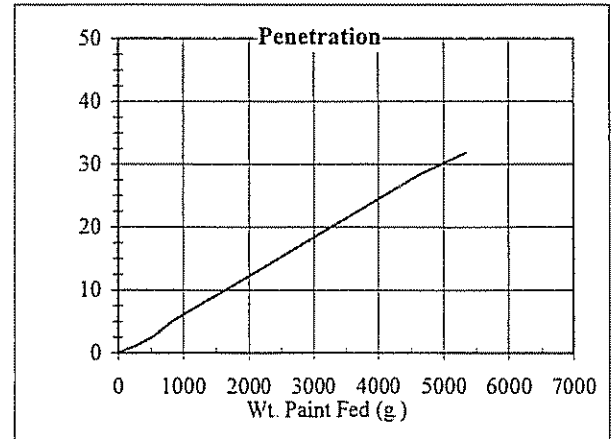
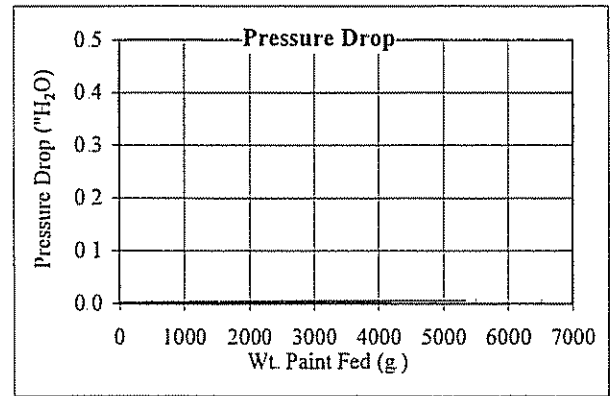
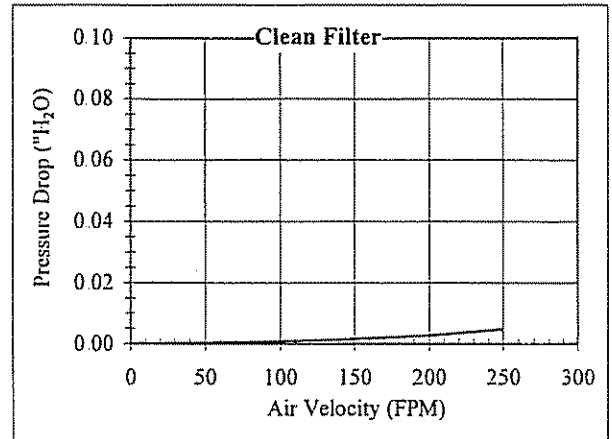
Test Information

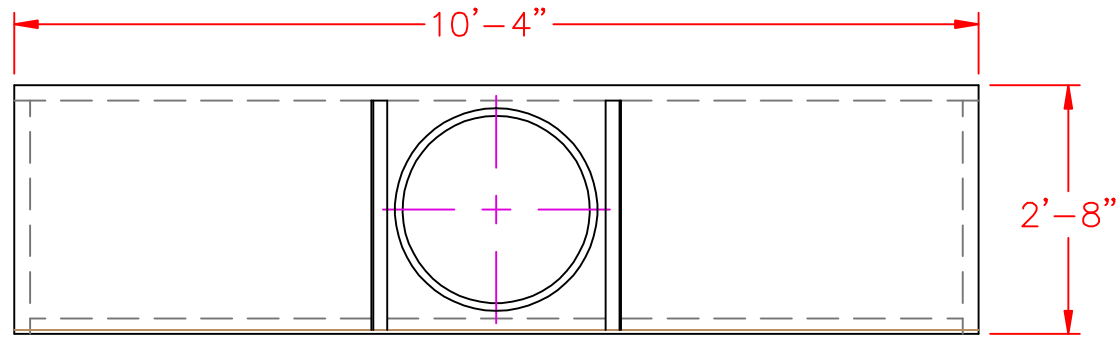
FILTER DESCRIPTION:(20x20 pad)
XXXXXXXXXX Yellow highloft fiberglass pad
PAINT DESCRIPTION:
XXXXXXXXXX High Solids Baking Enamel (S.W. #1 Permaclad 2400, red)
PAINT SPRAY METHOD:
XXXXXXXXXX Conventional Air Gun at 40 PSI
SPRAY FEED RATE:
XXXXXXXXXX 137 gr./min. 130 cc/min.
AIR VELOCITY:
XXXXXXXXXX 150 FPM

Test Results

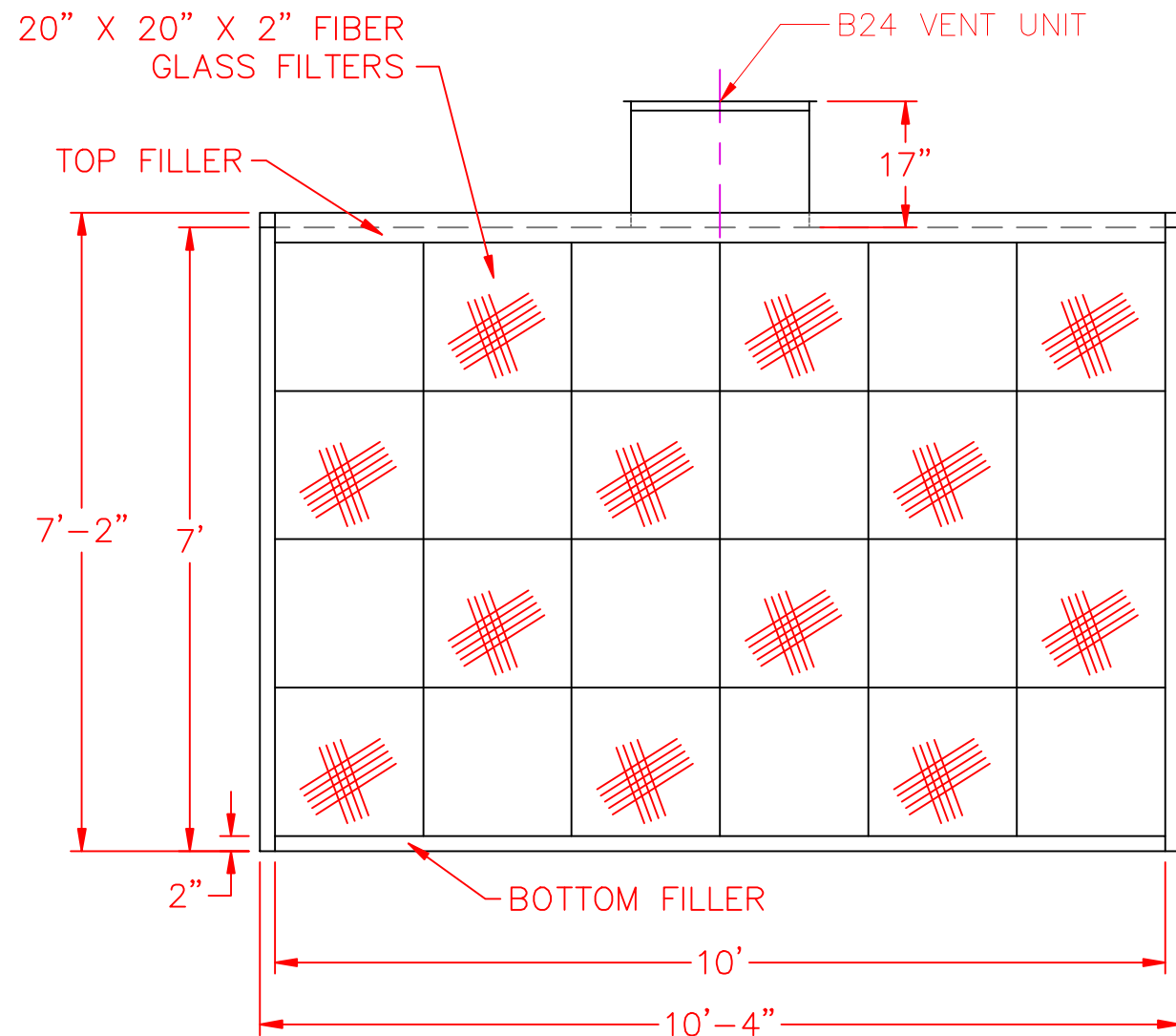
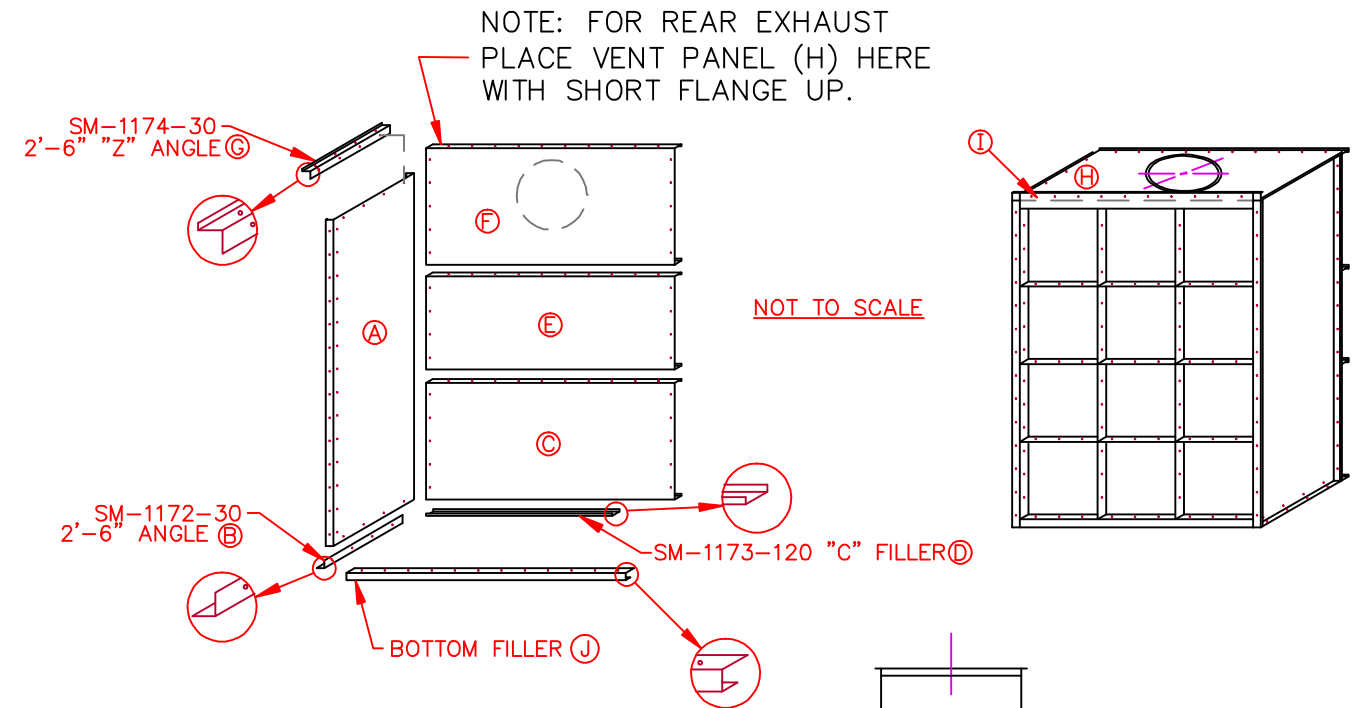
INITIAL PRESSURE DROP of Clean Test Filter
XXXXXXXXXX 0.002 in. water
FINAL PRESSURE DROP of Loaded Test Filter
XXXXXXXXXX 0.01 in. water
WEIGHT GAIN on TEST FILTER & TEST FRAME TROUGH
XXXXXXXXXX 4106 grams
PAINT HOLDING CAPACITY of TEST FILTER
XXXXXXXXXX 1093 grams = 2.4 lbs.
PAINT RUN-OFF
XXXXXXXXXX 3013 grams
WEIGHT GAIN on FINAL FILTER
XXXXXXXXXX 31.9 grams = PENETRATION
AVERAGE REMOVAL EFFICIENCY of TEST FILTER
XXXXXXXXXX 99.23 %

Test Engineer: Todd Kruger
 Supervising Engineer: K. C. Kwok, Ph.D.

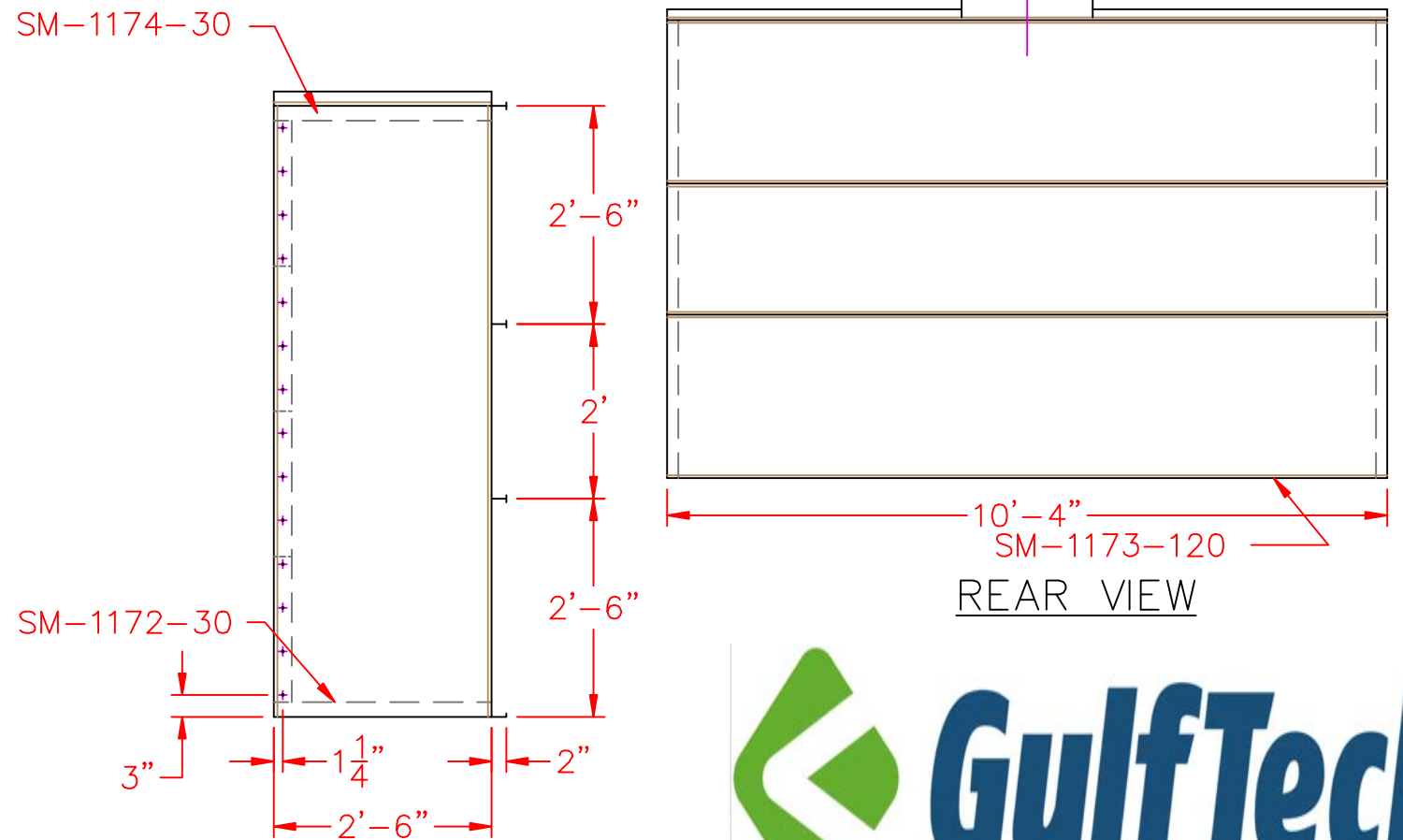




TOP VIEW



FRONT VIEW



RIGHT SIDE VIEW

REAR VIEW